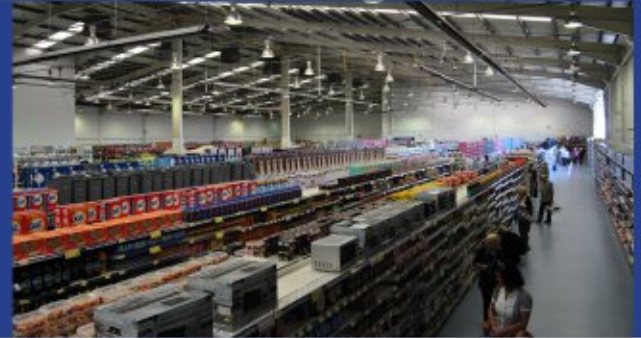


B&M Retail Ltd Property Requirement 2011



Successful Format:

- On average 15,000 shoppers per store per week
- 2009 Turnover over £450m
- 2009 Profit before tax exceeding £32m
- Many institutional landlords including: British Land, Hammersons, LandSec, Grosvenor, ING Real Estate, Standard Life, Prupim, and more



One of the UK's fastest expanding retailers:



- 30+ stores acquired in 2007
- 40+ stores acquired in 2008
- 40+ stores acquired in 2009
- 50+ stores acquired in 2010

50+ Stores required for 2011:

- In Town & Out of Town locations
- 10,000 - 30,000 sqft Ground Floor Sales
- Strong Secondary High St
- Prominent Stand Alone near Retail Parks and Foodstores
- Within 4 hour drive from Merseyside (orange on map)
- Existing units ready for occupation



Please contact:

Email: bandm@burnsproperty.co.uk
Tel: 0151 227 2199
Fax: 0151 227 2804

BPC
2nd Floor
1 Water Street
Liverpool
L2 0RD

